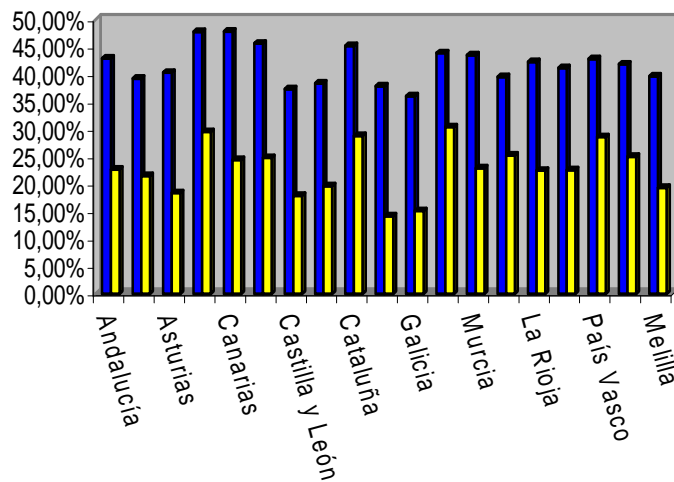


ESFUERZO DE EMANCIPACIÓN



■ Esfuerzo de emancipación sin ayuda ■ Esfuerzo de emancipación con ayuda

ESFUERZO DE EMANCIPACION

CCAA	Esfuerzo sin ayuda			Esfuerzo con ayuda		
	Todos	Femenino	Masculino	Todos	Femenino	Masculino
Andalucía	42,96%	45,71%	40,11%	22,74%	24,24%	21,19%
Aragón	39,27%	41,77%	36,25%	21,54%	22,89%	19,91%
Asturias	40,32%	43,50%	36,49%	18,44%	19,81%	16,79%
Baleares	47,78%	48,94%	46,28%	29,54%	30,20%	28,70%
Canarias	47,87%	50,64%	44,51%	24,44%	25,81%	22,77%
Cantabria	45,64%	49,60%	40,69%	24,81%	26,95%	22,13%
Castilla y León	37,36%	39,98%	34,50%	17,93%	19,12%	16,63%
Castilla-La Mancha	38,35%	40,78%	35,77%	19,64%	21,13%	18,05%
Cataluña	45,19%	47,01%	42,80%	28,80%	29,98%	27,26%
Extremadura	37,89%	40,41%	35,37%	14,19%	15,22%	13,17%
Galicia	36,01%	38,63%	32,76%	15,13%	16,17%	13,82%
Madrid	43,87%	44,92%	42,36%	30,42%	31,15%	29,37%
Murcia	43,55%	45,51%	40,98%	22,91%	23,83%	21,71%
Navarra	39,56%	41,52%	36,94%	25,22%	26,52%	23,49%
La Rioja	42,27%	44,46%	39,43%	22,51%	23,64%	21,04%
C. Valenciana	41,24%	43,56%	38,51%	22,56%	23,90%	20,98%
País Vasco	42,79%	44,59%	40,24%	28,64%	29,81%	26,98%
Ceuta	41,84%	45,72%	37,38%	25,02%	27,63%	22,02%
Melilla	39,70%	46,22%	33,64%	19,39%	22,25%	16,72%
Total	42,17%	44,34%	39,50%	24,35%	25,70%	22,68%